

Changing Jasperactive's Default Working Directory Location

This document explains how to change the location of the default working directory in which Jasperactive stores course starter, resource, and project files.

This article is valid for Jasperactive version 1.1.0.0 or higher. For older versions, refer to the [Working Directory](#) article in the Jasperactive Support Knowledge Base (<http://support.jasperactive.com/>).

During the installation process, Jasperactive creates a folder (named Jasperactive) to store the files necessary to complete exercises and assessments. By default, Jasperactive creates this folder in the Documents folder.

You can change the default folder location on the local system for all users or for specific users only.

To change the default folder location, perform the following steps.

Step 1: Log in to [Jasperactive](#). If necessary, select **Student** from the Role menu.

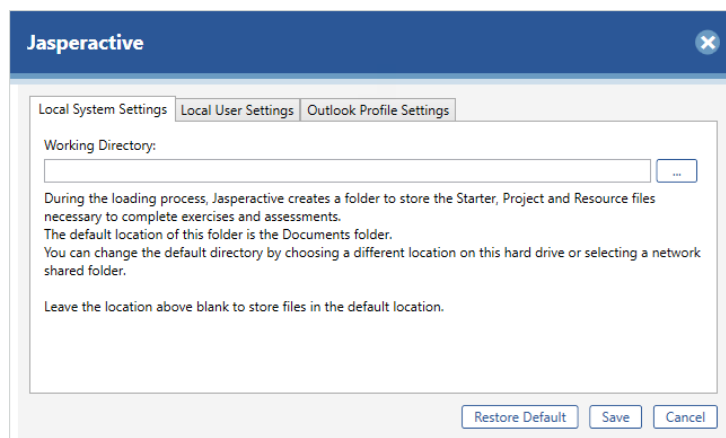
Step 2: Click the **Configuration of the Desktop Application** (⚙️) button in the navigation bar.



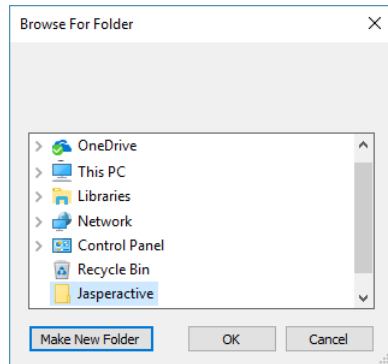
Step 3: In the window that appears, you are given two options in which to specify a new default folder location: Local System Settings and Local User Settings.

- Use the **Local System Settings** option to change the default folder location for all local system users (all users accounts).
- Use the **Local User Settings** option to change the default folder location for individual system users (specific user accounts). The change affects the specified user only.

Step 4: Click the appropriate Settings tab that reflects the user(s) for whom you want to change the default folder location.

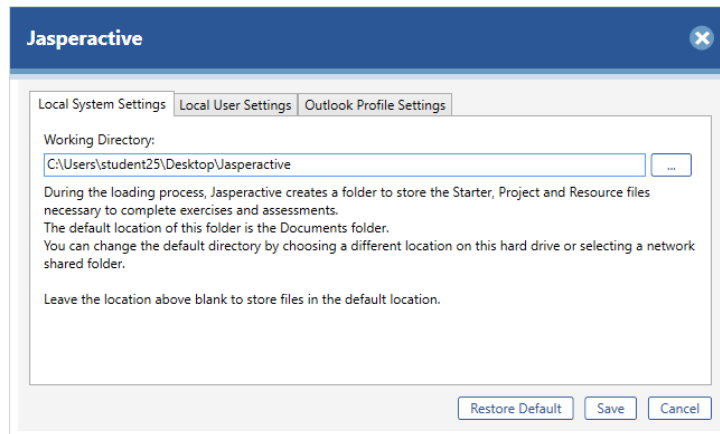


Step 5: Click the **Browse** (...) button to the right of the Working Directory field to display the Browse for Folder dialog box.

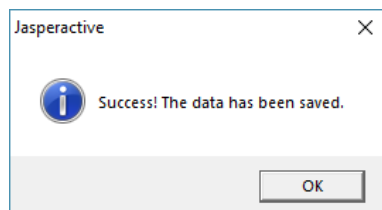


To create a new folder, click the Make New Folder button.

Step 6: Navigate to the desired folder location and click **OK**. The Working Directory field displays the location you specified.



Step 7: Click **Save** to save the changes. A confirmation box appears.



Step 8: Click **OK** to close the confirmation box.

Step 9: Click the **Close** button (X) to close the Settings window.

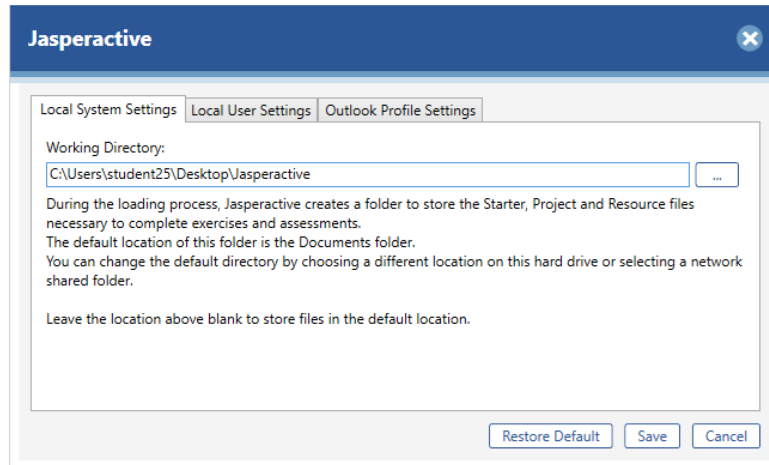
The instruction steps associated with opening and saving files automatically update to reflect the folder location change.

Restoring the Default Working Directory Location

To restore the default working directory location, perform the following steps.

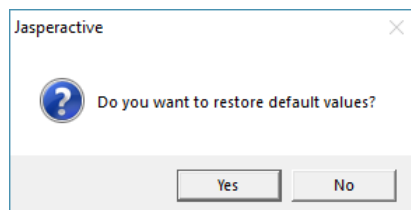
Step 1: Log in to [Jasperactive](#). If necessary, select **Student** from the Role menu.

Step 2: Click the **Configuration of the Desktop Application** (⚙️) button in the navigation bar.



Step 3: Click the appropriate Settings tab that reflects the user(s) for whom you want to restore the default working directory location.

Step 4: Click the **Restore Default** button. A confirmation box appears.



Step 5: Click **Yes** to confirm the change, and then click **OK** to close the confirmation box.

Step 6: Click the **Close** button (X) to close the Settings window.

The instruction steps associated with opening and saving files automatically update to reflect the folder location change.

If you need further assistance, contact Jasperactive Support (<http://support.jasperactive.com/>).